



www.mondialulm.fr

PILOT INFORMATION

International Microlight Show 2024

VISITING PILOTS

***MICROLIGHTS, AEROPLANES AND
HELICOPTERS***

Blois-le-Breuil Airfield (LFOQ)

From 12 to 15 September 2024

Pilots may arrive from Thursday 12 September onwards



www.mondialulm.fr

Ensuring a safe show for all visitors

This year's International Microlight Show promises an exciting line-up of microlight aircraft, featuring airborne displays, demonstration flights, and a large number of pilots arriving by air. Visitors may fly in from Thursday onwards.

Safety is essential, and we can all do our part to ensure a safe show.

The enclosed pilot information (available in both English and French) explains the procedures all visiting pilots must follow, including mandatory registration, and the three specific joining procedures.

The **South Side Circuit** shall be used by pilots wishing to land on the grass runway 12-30 (650m x 50m) and destined for the microlight parking area. Circuit calls for this runway must be in French only.

The **North Side Circuit** shall be used by fixed and rotary wing pilots wishing to land on the paved runway 12-30 (1250m x 30m) and destined for the aeroplane / helicopter parking area. Circuit calls for this runway can be in French or English.

The **special paramotor procedures** must be followed by anyone wishing to arrive at the show by paramotor, or intending to perform flights from the paramotor area (radio required).

We recommend that all pilots install the SAFESKY app (partner of the event). Your entry fee to the show includes one month's access.

By activating this application on your mobile device, you will be more visible to other pilots and to the event organisers.

We look forward to welcoming you all to this year's show.

Safe flights

Sébastien PERROT
President of the French Microlight Federation

Éric BELLINGHERY
Head of Flight Operations

OVERVIEW

03 *Map of the show*

04 *Flight schedule*

05 *Information for visitors arriving by air*

06 *Temporary restricted area and VFR entry points (south and north)*

07 *> Aerodrome circuit: South Side*

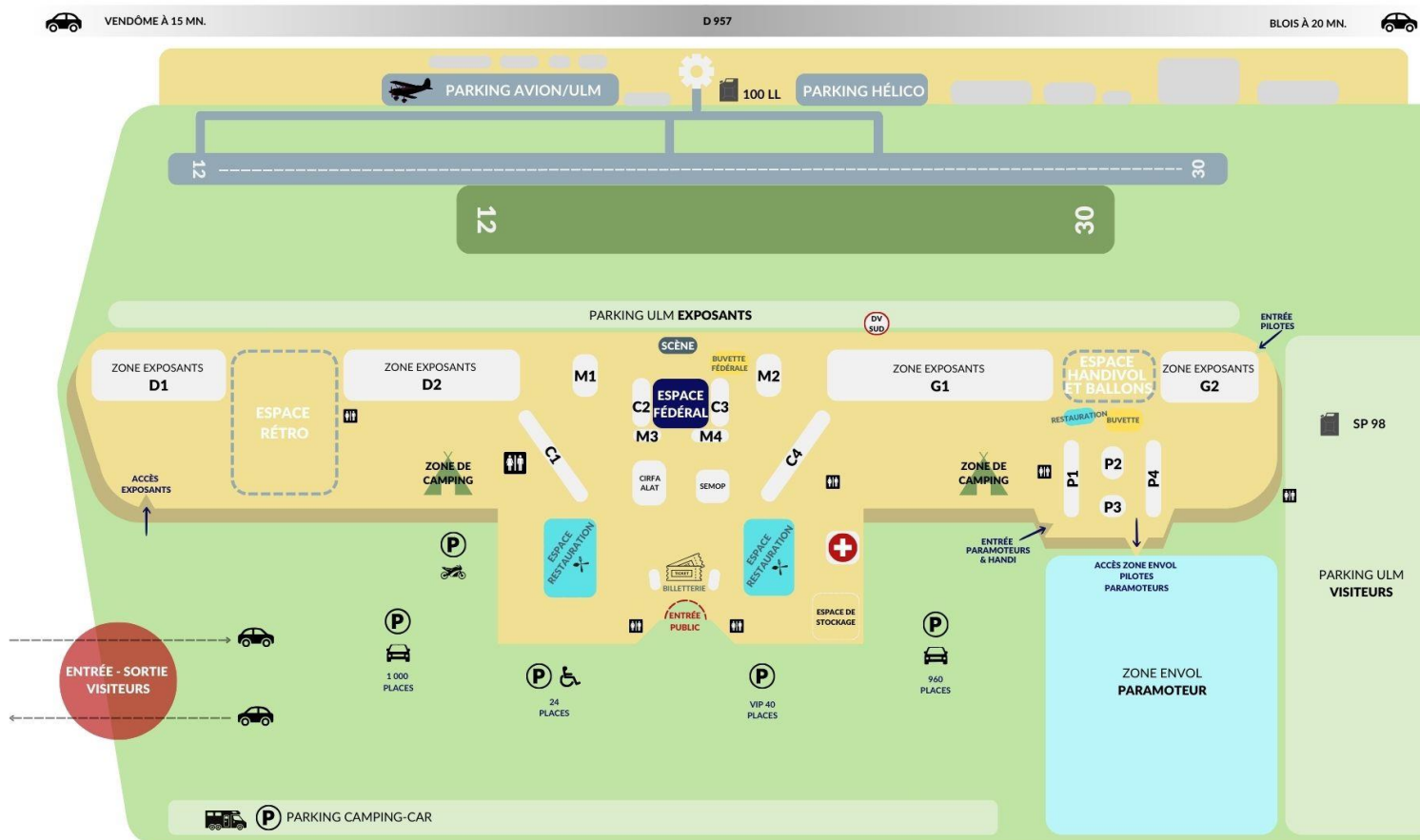
14 *> Aerodrome circuit: North Side*

20 *> Special paramotor procedures*

32 *FAQ*

34 *Contact Us*

MAP OF THE SHOW



Bienvenue au Mondial de l'ULM **2024**
13, 14 & 15 septembre

FLIGHT SCHEDULE

PARAMOTOR
FLIGHT SCHEDULE

See PAGE 21

International Microlight Show: Flight Schedule

Thursday 12/09	08:00	15:00	VISITOR AND EXHIBITOR FLIGHTS
	15:00	17:00	STOL QUALIFICATION FLIGHTS
	17:00	18:30	REHEARSAL FLIGHTS
	18:30	20:00	VISITOR AND EXHIBITOR FLIGHTS
Friday 13/09	07:00	11:30	LOCAL AND PARAMOTOR FLIGHTS
	08:00	11:30	VISITOR AND EXHIBITOR FLIGHTS
	11:30	13:30	SHOW OPENING – AIRBORNE DISPLAY
	13:30	18:00	VISITOR AND EXHIBITOR FLIGHTS
	18:00	18:30	RC AIRCRAFT AIRBORNE DISPLAY
Saturday 14/09	07:00	11:00	LOCAL PARAMOTOR AND BALLOON FLIGHTS
	08:00	11:00	VISITOR AND EXHIBITOR FLIGHTS
	11:00	11:30	RC AIRCRAFT AIRBORNE DISPLAY
	11:30	13:30	AIRBORNE DISPLAY
	13:30	15:30	VISITOR AND EXHIBITOR FLIGHTS
	15:30	17:00	AIRBORNE DISPLAY
	17:00	18:00	STOL COMPETITION (FINAL)
	18:00	19:00	VISITOR AND EXHIBITOR FLIGHTS
	19:00	21:00	VOLS DE PRÉSENTATIONS + VOLS DE MODEL REDUIT ET ARTIFICE
Sunday 15/09	08:00	10:30	LOCAL PARAMOTOR AND BALLOON FLIGHTS
	08:00	10:30	VISITOR AND EXHIBITOR FLIGHTS
	10:30	11:00	AEROPLANE FORMATION FLIGHTS
	11:00	12:30	CLOSING FLIGHTS
	12:30	20:00	VISITOR AND EXHIBITOR FLIGHTS

You may visit by air from 9am on
12/09/2024

Opening
Times

Friday
13/09
0900 – 2000.

Saturday
14/09
0900 - 2000.

Sunday
15/09
0900 - 2000.

VISITOR FLIGHTS

- Visitors may fly in or out of the show from Thursday 12/09
- Based pilots will be able to fly on Thursday or Friday, depending on flight schedules.
- Marshalling and fuelling will be available.

EXHIBITOR FLIGHTS

- Exhibitors will be able to carry out demonstration flights throughout the show, subject to the published program.
- Demonstration flights will not be permitted when airborne displays are taking place

PARAMOTOR AND BALOON FLIGHTS

- Paramotor pilots may perform local flights within their designated flight area.
- Paramotor manufacturers may perform test flights.
- Baloons and airships may operate Saturday morning and Sunday morning from the paramotor area.

AIRBORNE DISPLAYS

RESTRICTED AIRSPACE DURING ALL DISPLAYS

- Throughout the show, there will be a number of airborne displays with microlight aircraft.
- Performed by experienced pilots, the aim of these displays is to showcase to the general public the many different categories of microlight aircraft available.
- Manufacturers will also be able to demonstrate their aircraft.
- Airborne displays will be accompanied by a running commentary.
- Any exhibitors wishing to take part in airborne displays will be required to register with the flight operations team, and attend compulsory briefings.
- Display pilots may be required to participate in rehearsal flights on Thursday between 5pm and 6.30pm

INFORMATION FOR VISITORS FLYING IN

PARAMOTOR INFORMATION

is provided on page 20.

- You must register online and have received a PPR number and an entry point (N or S).
- Before signing up, you must confirm that you have read and understood the pilot information.
- You will receive a badge which you must print and clearly display on your aircraft, to assist with parking.
- If you lose your slot information, you will need to book a new slot on <https://mondialulm.fr> . If you have to divert, you can call the event manager on 0033 645 473 930 who will re-assign you a slot, subject to availability.
- There will be a temporary restricted zone centered on Blois airfield. It is 6.5 nm across and extends up to 4000ft AMSL.
- Please note that entry routes, frequencies, and joining procedures will differ depending on the runway you are planning to land on (north side circuit for the paved runway, and south side circuit for the grass runway).

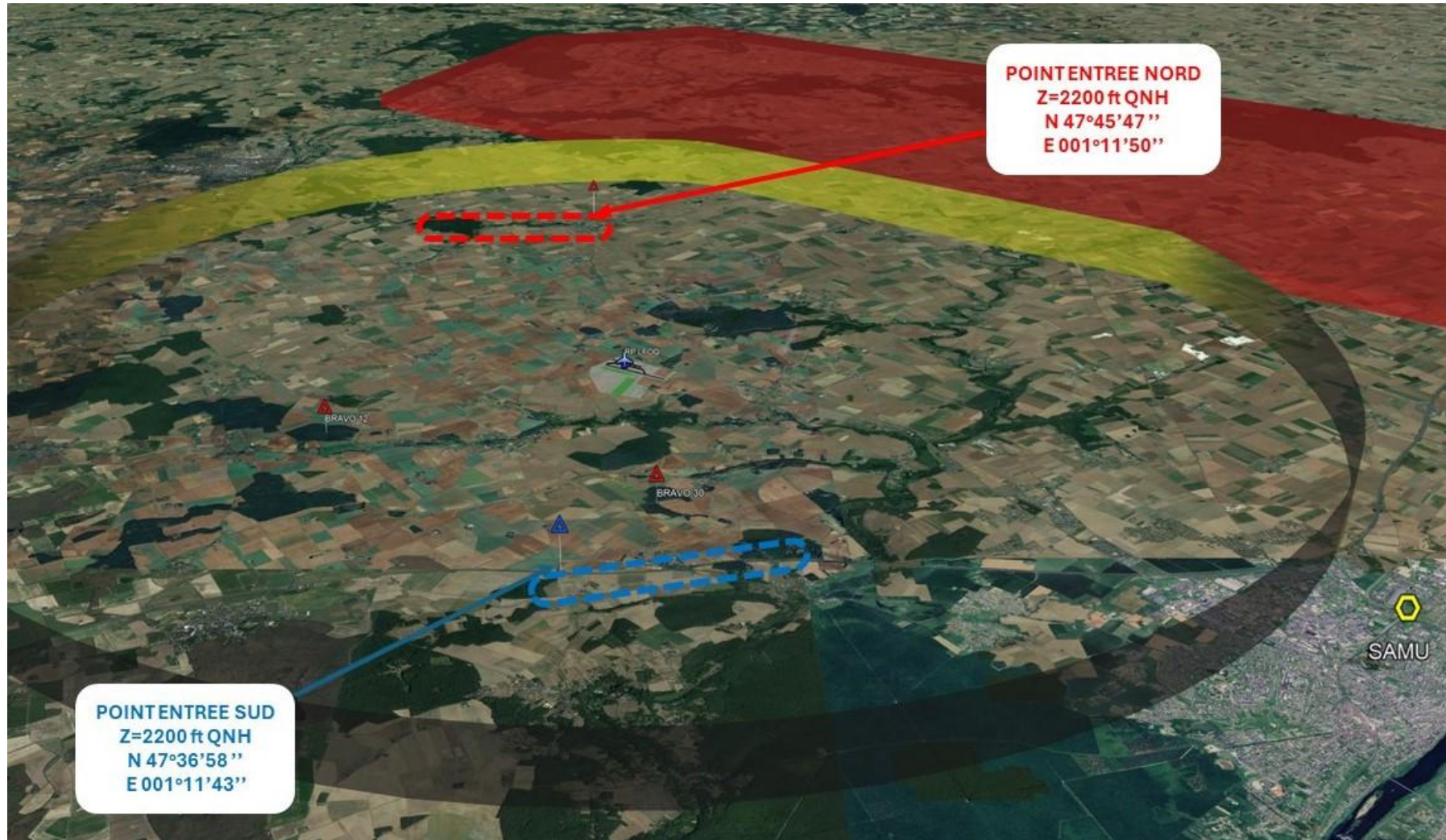
- All information relating to the two circuits is provided in this document.
- We will be organising a webinar in the coming weeks to answer any questions you may have about the event.
- You must bring your own tie-downs and secure your aircraft as soon as you arrive, in case of poor weather conditions.
- Before departing, you must check the latest event information, which will be published online by the organisers.
- We strongly suggest that you install the SAFESKY application when attending the event.
- You must have sufficient fuel reserves (at least 30 minutes extra endurance) to divert if required. Here are some suggested alternates:

FOUGERES SUR BIEVRE LF3128 - 15NM/154°, CHOUZY LF4155 : 11NM/174°. AMBOISE DIERRE / LFEF; VIERZON / LFFV; TOURS LE LOUROUX / LFJT; ORLEANS SAINT DENIS / LFOZ; LA FLECHE / LFAL; SAUMUR SAINT FLORENT / LFOD; LOUDUN / LFDL .

ATIS
127.350 MHZ
You must
listen to the
ATIS before
joining

RESTRICTED ZONE

NORTH AND SOUTH ENTRY POINTS



ARRIVAL INFORMATION: SOUTH SIDE CIRCUIT FOR RWY 12/30 (GRASS)

- Recommended heading for arrivals from the south /southeast/ southwest: between 121 and 300.
- **If you are arriving from the north, you must avoid entering the restricted zone.**
- Please arrive only within your allotted slot time.

PILOT INSTRUCTIONS:

- You must listen to the ATIS on **127.350 MHz** before entering the restricted zone. Arrival and runway information will be provided on this frequency.
- Once you have received the ATIS, you should contact the event operations frequency on 130.200 MHz (messages in French only).

Entry point S (south) is located at N 47°36'58" / E 001°11'43"

This point is identifiable by a bridge over the A10 motorway, 3.8nm south of the airfield. It is next to a recognisable forest.

When you pass S, you should pass your arrival information (in French only) over the radio, in the following format:

S + Type Letter + PPR number

(Type letters: M for 3-axis microlight, G for autogyro, P for flexwing microlight, H for helicopter)

- If circuit traffic is heavy, or if requested to do so by the radio operator, you should take up a left orbit in the designated holding area at 2200ft QNH.

- You should then follow instructions from the radio operator and descend to 1,400 ft QNH, following the specific procedures for each runway:

- **RWY 12 in use:** join right downwind via B12.
- **RWY 30 in use:** join left base via B30.

Location of B12: N 47°39'21" - E 001°08'43" (rectangular wooded area). Right hand circuit RWY 12.

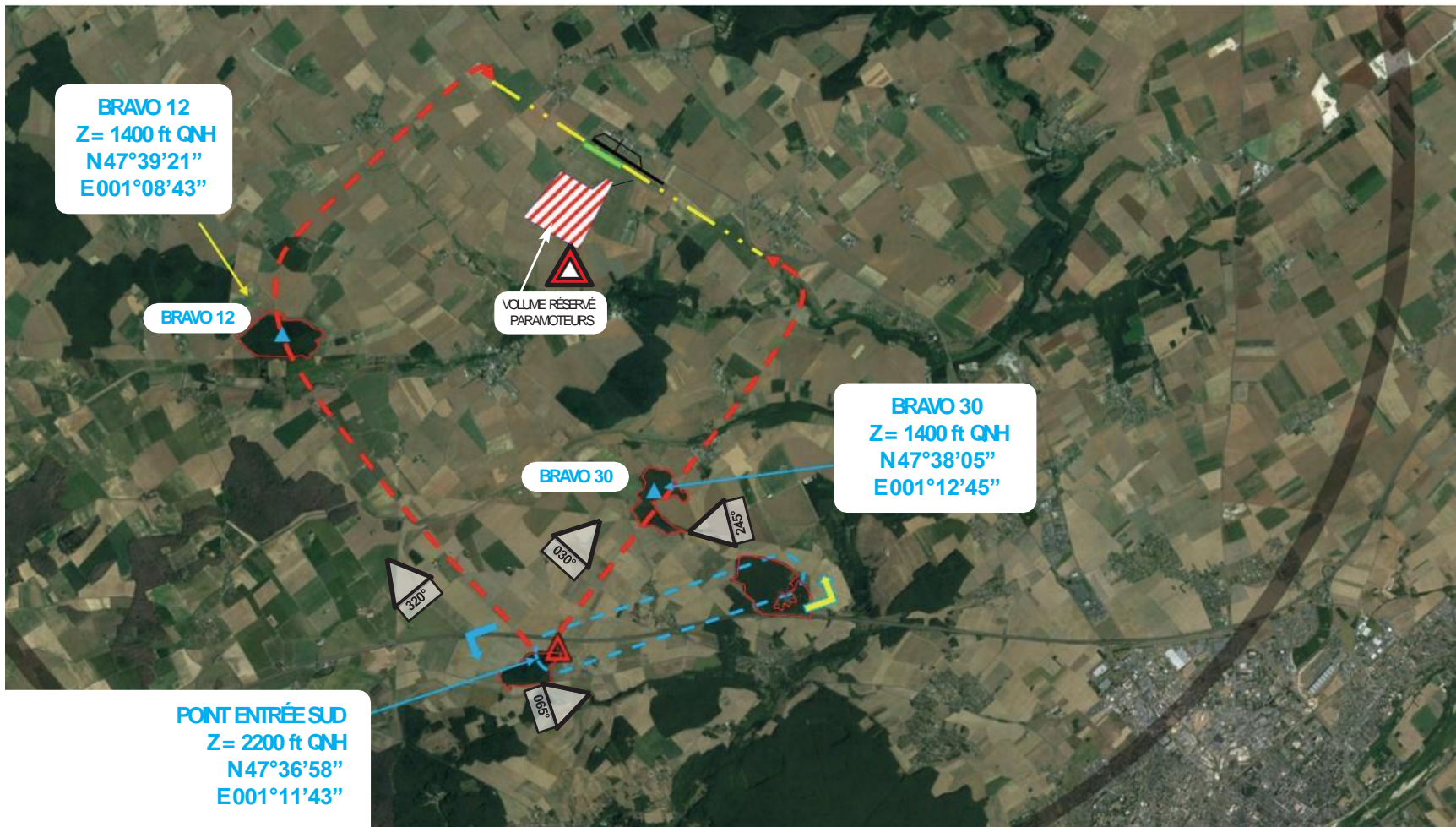
Location of B30: N 47°38'05" - E 001°12'45" (C-shaped wooded area (petit bois en C). Left-hand circuit RWY30.

- Once you have reached B12 / B30 you should report your position and then maintain radio silence until landing, following instructions from the radio operator.
- After landing, you should switch to the ground frequency on 123,350 MHz and follow instructions from the marshalling team.
- If you are an exhibitor, please let the marshalling team know on first contact, so they can guide you to your stand.
- **If you have a flight plan, you MUST close it by phone on arrival (+33 1 56 301 301).**

PILOT INFORMATION

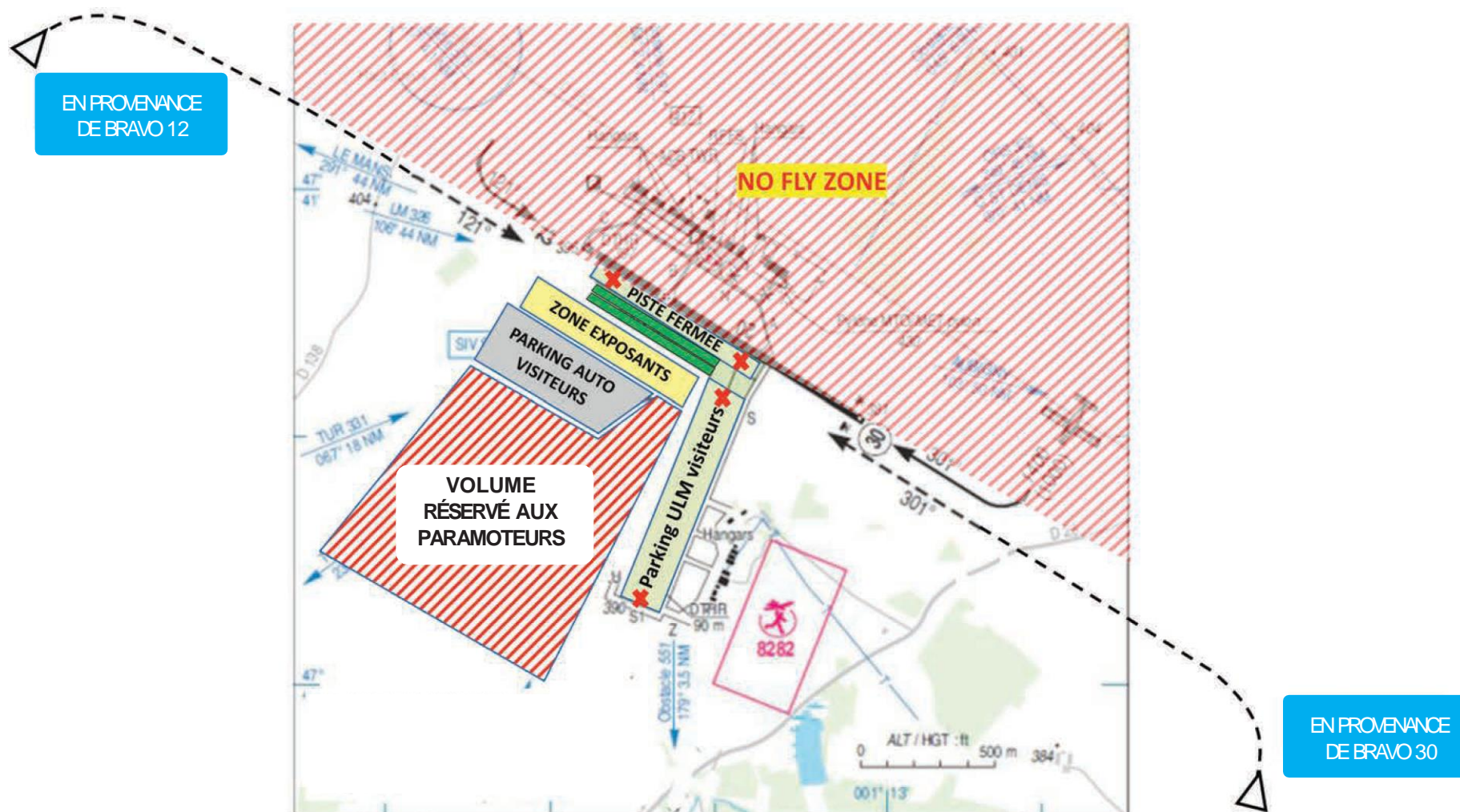
SOUTH SIDE CIRCUIT FOR RWY 12/30

GRASS



PILOT INFORMATION

ARRIVAL FROM THE SOUTH – RWY 12/30 GRASS



PILOT INFORMATION

SOUTH SIDE CIRCUIT

RWY 12/30 GRASS (MICROLIGHTS ONLY)

SAFETY FIRST!

TRAFFIC WILL BE HEAVY: MAINTAIN A GOOD LOOKOUT

YOU SHOULD MAINTAIN AN IAS OF BETWEEN 90 AND 100 KPH

YOU MUST NOT FLY NORTH OF THE 12/30 EXTENDED CENTERLINES

RUNWAY DIMENSIONS: 650 M x 50M

**ENGLISH CIRCUIT CALLS ARE ONLY ALLOWED IF ARRIVING VIA
THE NORTH SIDE CIRCUIT (12/30 PAVED)**

**IF UNABLE TO MAINTAIN VMC, YOU MUST DIVERT BEFORE ENTERING THE
RESTRICTED AREA**

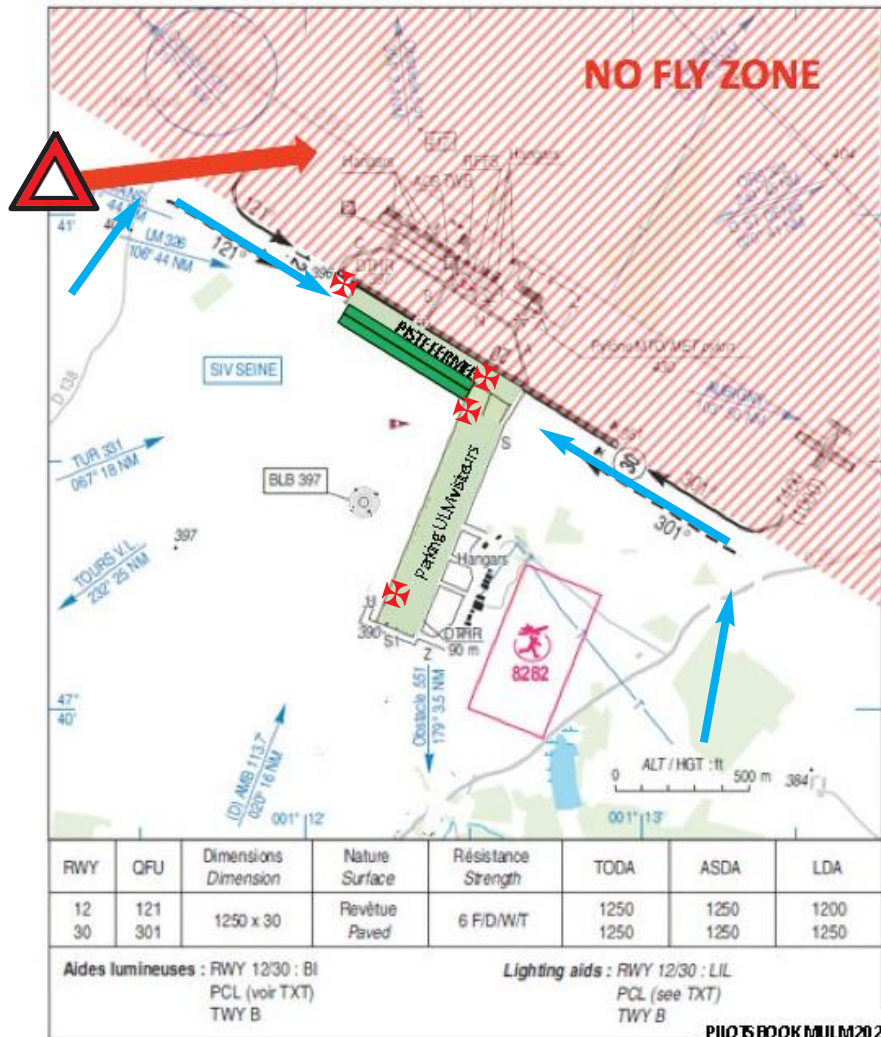
IN CASE OF RADIO FAILURE:

- **BEFORE ENTERING THE ZONE: YOU MUST DIVERT**
- **AFTER ENTERING THE ZONE BUT BEFORE S POINT : YOU MUST LEAVE THE ZONE AND DIVERT**
- **AFTER PASSING S POINT AND IN RADIO CONTACT: FOLLOW DEFINED CIRCUIT AND LAND**

PILOT INFORMATION

SOUTH SIDE CIRCUIT

RWY 12/30 GRASS (MICROLIGHTS ONLY)



- If you are arriving via S point and in contact with the ops frequency (130.2) you **MUST NOT** fly north of the grass runway (see diagram).
- **The northern half of the airspace is reserved for pilots operating on RWY 12/30 paved**

PILOT INFORMATION

SOUTH SIDE CIRCUIT

ARR / DEP PROCEDURES FOR RWY 12/30 GRASS

- Runway 12 grass uses a right-hand circuit. Runway 30 grass uses a left-hand circuit.

- Simultaneous landings and takeoffs are not permitted
- Once you have vacated the runway, you should switch to ground operations on **123.250 MHz**

- You must tie down your aircraft at your parking position.

- **Flight plans**

Must be closed on arrival
(+33 1 56 301 301)

ARRIVAL 12 GRASS



ARRIVAL 30 GRASS



DEP. 12 GRASS



DEP. 30 GRASS



PILOT INFORMATION

SOUTHBOUND DEPARTURES

ON RWY 12/30 GRASS

- After startup, contact the ground frequency on **123.250 MHz** and follow the instructions of the marshalls.
- Once you have reached the holding point, contact the operations frequency on **130.200 MHz**.
- You must make blind calls to announce your departure, and ensure safe spacing with other traffic. After takeoff, you should climb to 1,700ft QNH for separation with arriving aircraft, which will be at 1,400ft QNH from B12 and B30.
- Dep. RWY 12 Grass: recommended heading of 130 until clear of the restricted area (approx. 7 nm).
- Dep. Rwy 30 Grass: recommended heading of 290 until clear of the restricted area (approx. 7 nm).
- **When departing, you should avoid overflying B12 and B30.**
- You must continue to monitor operations on **130.200 MHz** until you have left the restricted area.
- All departures on RWY 12/30 Grass are to the south
- You are responsible for activating your flightplan where required (Tel. +33 1 56 301 301)

PILOT INFORMATION

NORTH SIDE CIRCUIT

RWY 12/30 PAVED (1250M X 30M)

Recommended heading for arrivals from the north / northwest / northeast: between 301 and 120. If you are arriving from the south, you must avoid the temporary restricted area.

Pilots must:

- Listen to the ATIS on 127.350 before entering the restricted area.
- Contact the Blois FISO on 118.455 (in English or French).
- Enter via N point at 2,200ft QNH. A holding pattern is available in case of heavy traffic.

N (NOVEMBER) Point > N 47°45'47" / E 001°11'50"

- When passing N point, you should make initial contact with the FISO in the following format:

N + Type Letter + PPR number

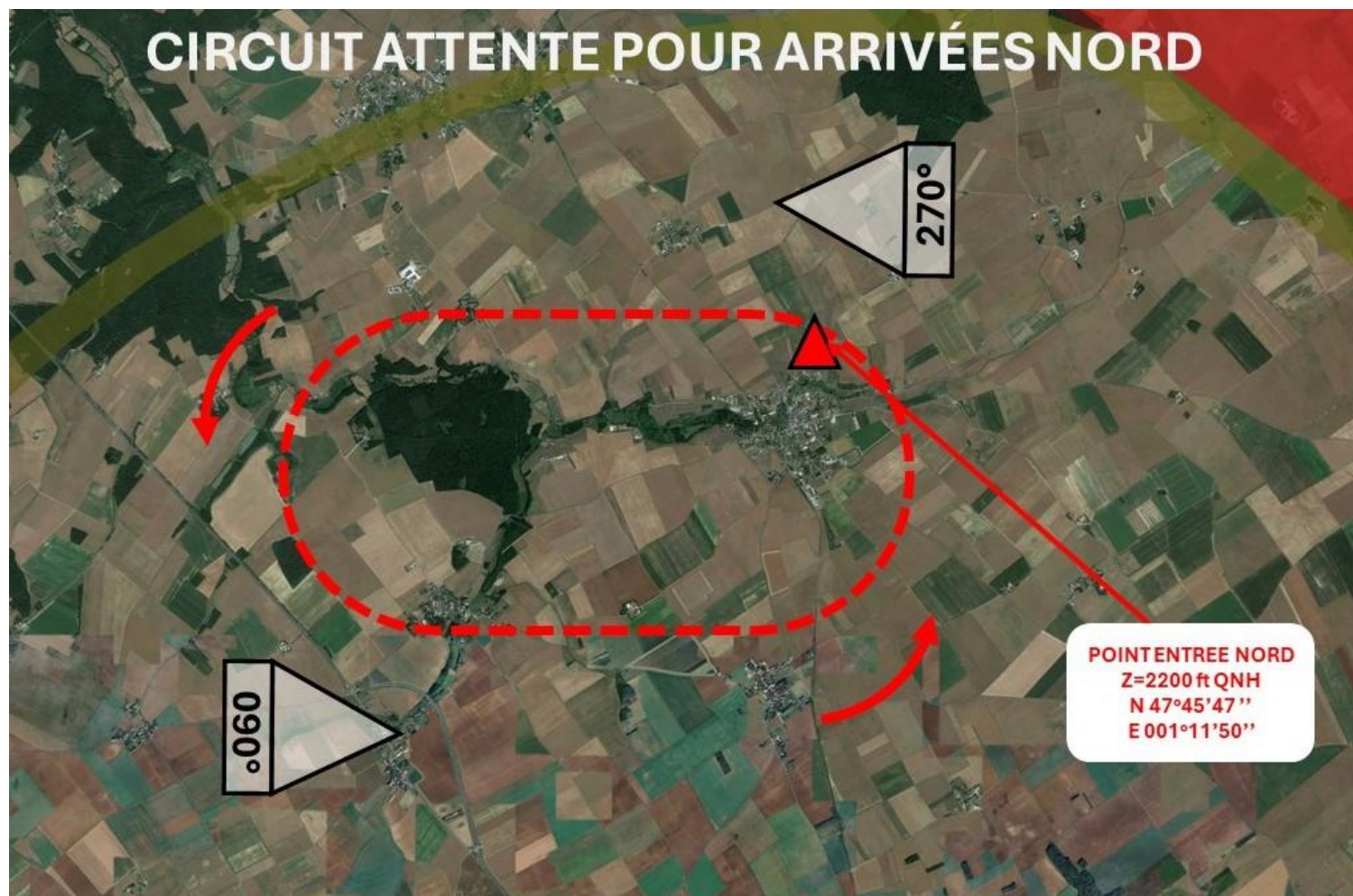
(Type letters: M for 3-axis microlight, G for autogyro, P for flexwing microlight, H for helicopter)

- You should then fly the circuit at 1,400ft QNH, listen for information from the FISO, and ensure separation from other circuit traffic.
 - RWY 12 Paved: Fly the published circuit (left hand)
 - RWY 30 Paved : Fly the published circuit (right hand)
- After landing, you should follow the FISO's and marshalls' instructions
- If you have a flight plan, you must close it by phone on **+33 156 301 301**

PILOT INFORMATION

ARRIVALS FROM THE NORTH

RWY 12/30 PAVED



PILOT INFORMATION

NORTH SIDE CIRCUIT- RWY 12/30 PAVED

SAFETY:

- **FLY AT AN APPROPRIATE SPEED FOR THE VOLUME OF TRAFFIC IN THE CIRCUIT**
- **DO NOT FLY SOUTH OF THE EXTENDED CENTERLINE OF RWY 12/30 PAVED**
- **RADIO COMMUNICATIONS IN ENGLISH ARE ONLY ALLOWED FOR TRAFFIC ARRIVING VIA THE NORTH SIDE CIRCUIT**
- **IF YOU ARE UNABLE TO MAINTAIN VMC, YOU MUST DIVERT BEFORE ENTERING THE RESTRICTED AREA.**

PROCEDURES TO BE FOLLOWED IN CASE OF RADIO FAILURE:

- **BEFORE ENTERING THE RESTRICTED AREA: DIVERT**
- **AFTER ENTERING THE RESTRICTED AREA BUT BEFORE REACHING N POINT: LEAVE THE RESTRICTED AREA AND DIVERT**
- **AFTER PASSING N POINT AND AFTER FIRST CONTACT WITH FISO: FLY PUBLISHED CIRCUIT AND LAND**

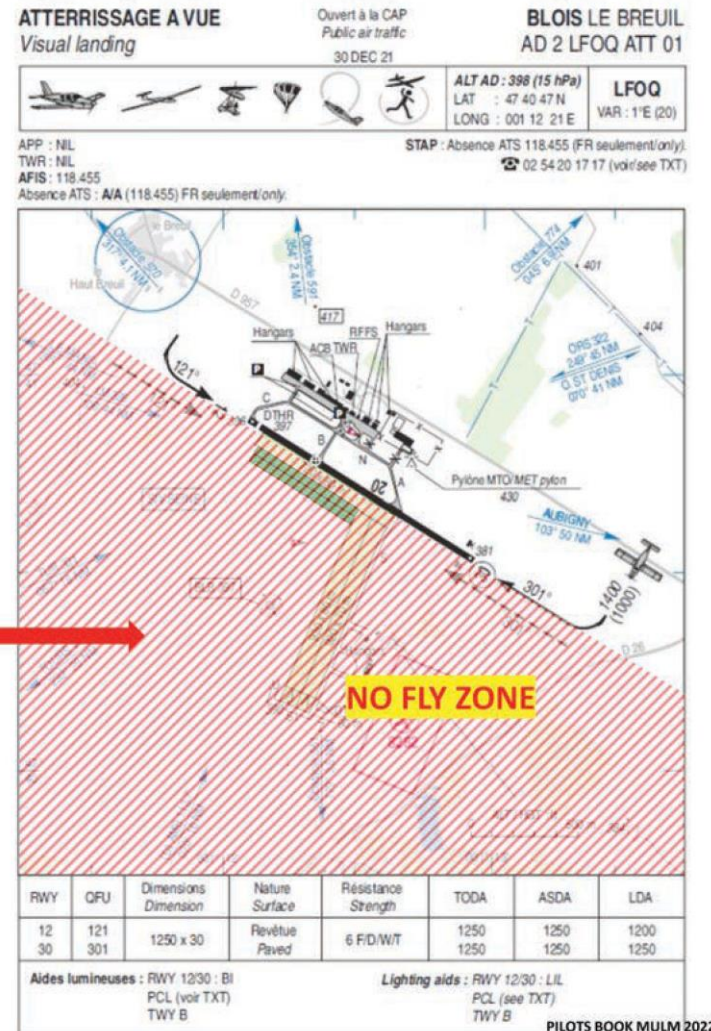
PILOT INFORMATION

NORTH SIDE CIRCUIT: RWY 12/30 PAVED

- If you are arriving from the north, you must contact **BLOIS INFORMATION** on 118.455 and fly the published circuit. You must not fly south of the extended centerline of RWY 12/30 paved.
- The southern side of the airfield is reserved for traffic operating from RWY 12/30 grass.



NO FLY ZONE



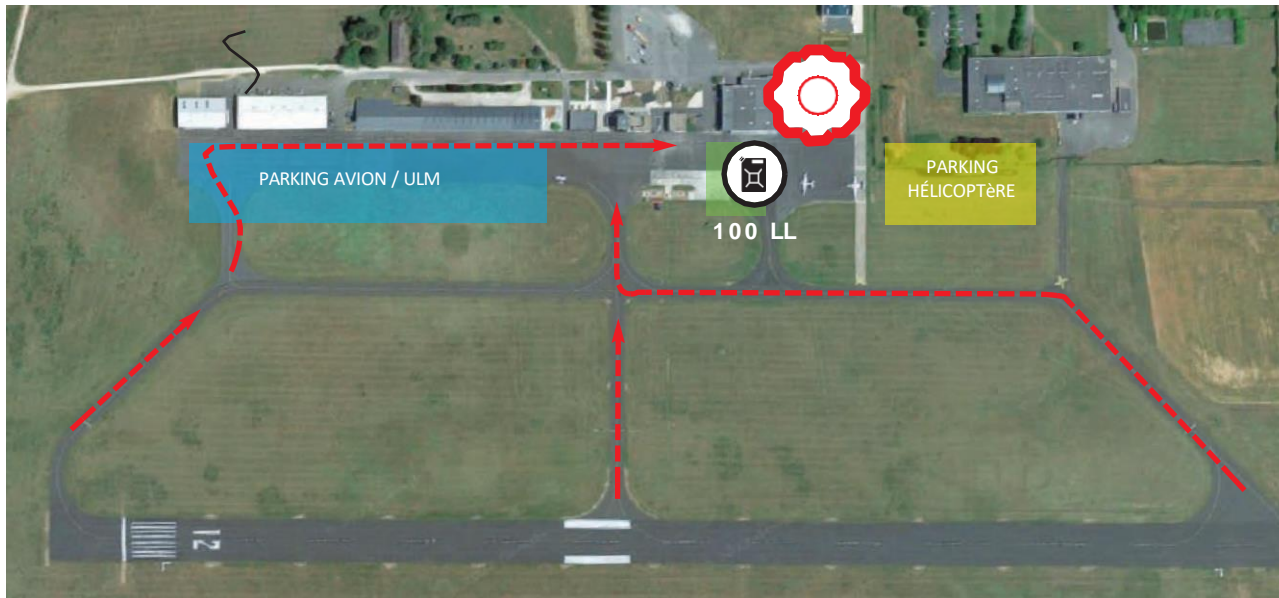
CONSIGNES PILOTES

NORTH SIDE CIRCUIT

RWY 12/30 PAVED

TAXI / PARKING / FUELLENG

- You must park in the NORTH parking area (following marshalls' instructions)
- Avgas and Jet A1 are available. Payment by BP fuel card or credit card.
- Landing and parking is free during the event.
- You are advised to tie down your aircraft (particularly microlights).
- A shuttle bus will be available to take pilots from the northern parking area to the show on the south side of the airfield.



PILOT INFORMATION

DEPARTURES VIA THE NORTH SIDE CIRCUIT: RWY 12/30 PAVED

- First contact with BLOIS INFORMATION on **118.455 in the following format:**

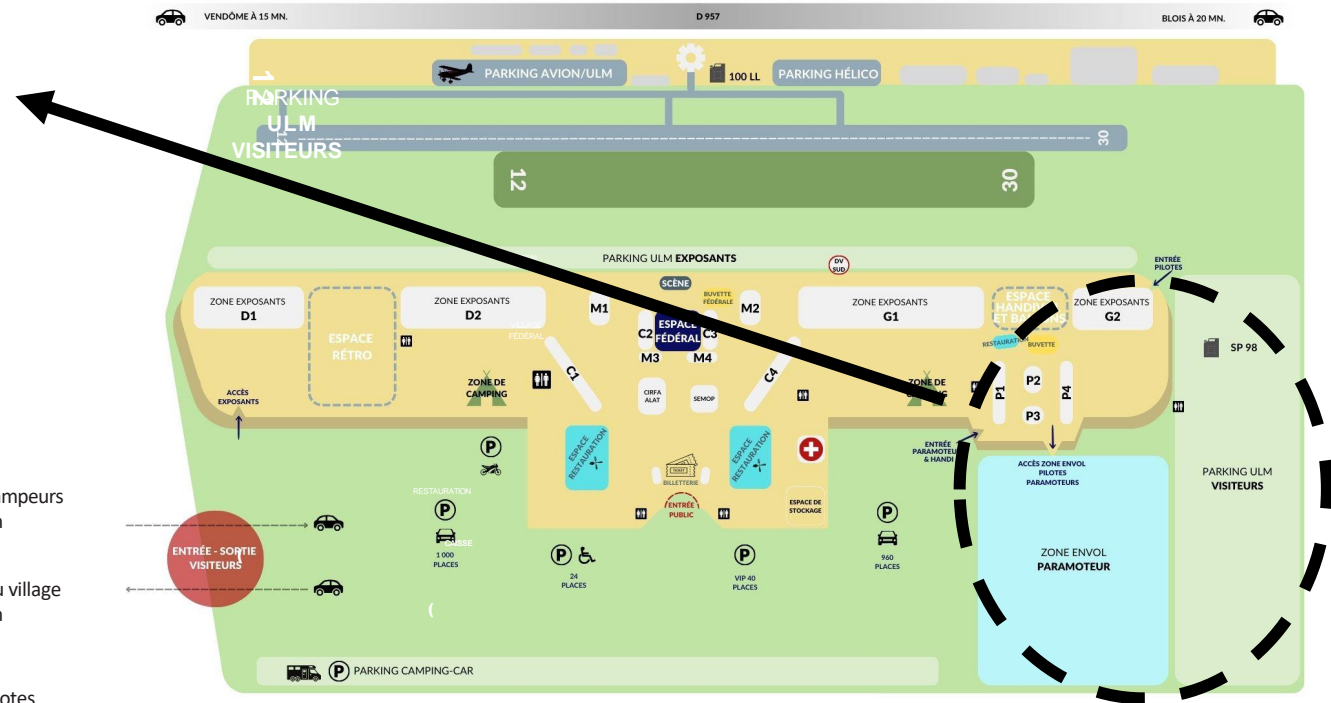
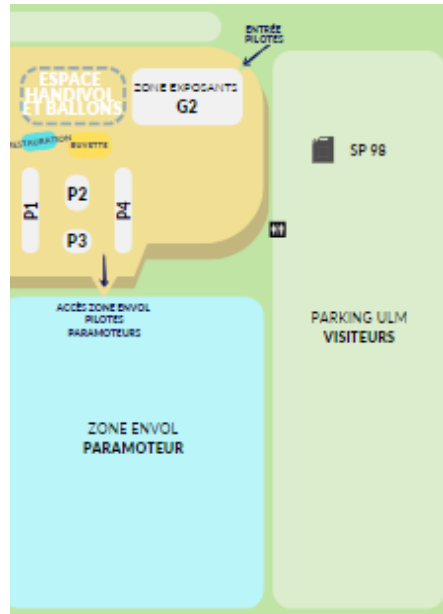
N + Type Letter + PPR number

(Type letters: M for 3-axis microlight, G for autogyro, P for flexwing microlight, H for helicopter)

Please keep to your allotted slot time.

- You must leave the restricted area northbound, on a heading of between 301 and 120
- If you have a flightplan, you should activate it with the local FIS after departure.
- You must continue to monitor the BLOIS INFORMATION frequency until you have left the restricted area.

INFORMATION FOR PARAMOTOR PILOTS: MAP OF PARAMOTOR VILLAGE



A Direction des vols (enregistrement des pilotes, contrôle des documents, assurances, licences).

B Commissaire de piste (contrôle des machines et autorisation accès à la piste).

1 Accès pour les pilotes campeurs à la zone de préparation Paramoteur.

2 Accès pour les pilotes du village à la zone de préparation paramoteur et pistes.

3 Point de contrôle des pilotes et machines venant du camping.

DV Directeur des vols.

NO FLY ZONE
Bande de 50 m.



Bienvenue au Mondial de l'ULM **2024**
13, 14 & 15 septembre

PARAMOTOR EVENT SCHEDULE

Information

THURSDAY

09:00 - 15:00	Open flying for visitors
15:00 - 17:00	STOL qualification round
17:00 - 18:30	Rehearsal flights
18:30 - 20:00	Open flying for visitors
20h00	End of flight program

SATURDAY

07:00 - 11:30	Open flying for visitors
11:30 - 13:30	Opening show
13:30 - 18:00	Open flying for visitors
18:00 - 18:30	Aero model presentation
18:30 - 20:00	Open flying for visitors
20:00	End of flight program

SATURDAY

07:00 - 10:00	Balloon flying / Open flying for visitors
08:00 - 11:00	Open flying for visitors and exhibitors
11:00 - 11:30	RC aircraft demonstration
11:30 - 13:30	Demonstration flights
13:30 - 15:30	Open flying for visitors and exhibitors
15:30 - 17:00	Demonstration flights
17:00 - 18:00	STOL competition final
18:00 - 19:00	Open flying for visitors
19:00 - 20:00	Demonstration flights
20:00- 20:30	RC and paramotor demonstration flights

SUNDAY

07:00 - 10:00	Balloon flights
08:00 - 10:30	Open flying for visitors and exhibitors
10:30 - 12:30	Closing demonstration flights
12:30 - 20:00	Open flying for visitors
20:00	End of flight program

INFORMATION FOR PARAMOTOR PILOTS: ARRIVING BY AIR



- **BEFORE YOU COME**

You must register at www.mondialulm.fr to obtain a radio callsign

If you arrive on the day without PPR, you will not be allowed to land.

Safety is our primary concern. After many years of accident-free events, we want it to stay that way!

- When requesting PPR, you will be given a callsign (based on your aircraft category). This allows us to manage the differences in speed between different arriving traffic.
- You must use this callsign when calling on arrival.

COMPULSORY EQUIPMENT



- You must have a radio: 147,00 Mhz



- YOU MUST HAVE AN ALTIMETER/VARIOMETER

INFORMATION FOR PARAMOTOR PILOTS: ARRIVING BY AIR

- YOU ARE ADVISED TO ARRIVE VIA THE SOUTH (HEADING BETWEEN 121 AND 300).

 **IF YOU ARRIVE FROM THE NORTH, YOU MUST AVOID THE RESTRICTED AREA**

- Entry into the restricted zone will be from the west. You Must make contact on the dedicated frequency of 147.000

You must join via the Lande de Gaulois Water Tower, shown below.



INFORMATION FOR PARAMOTOR PILOTS: JOINING PROCEDURES

- YOU ARE ADVISED TO ARRIVE VIA THE SOUTH (HEADING BETWEEN 121 AND 300).



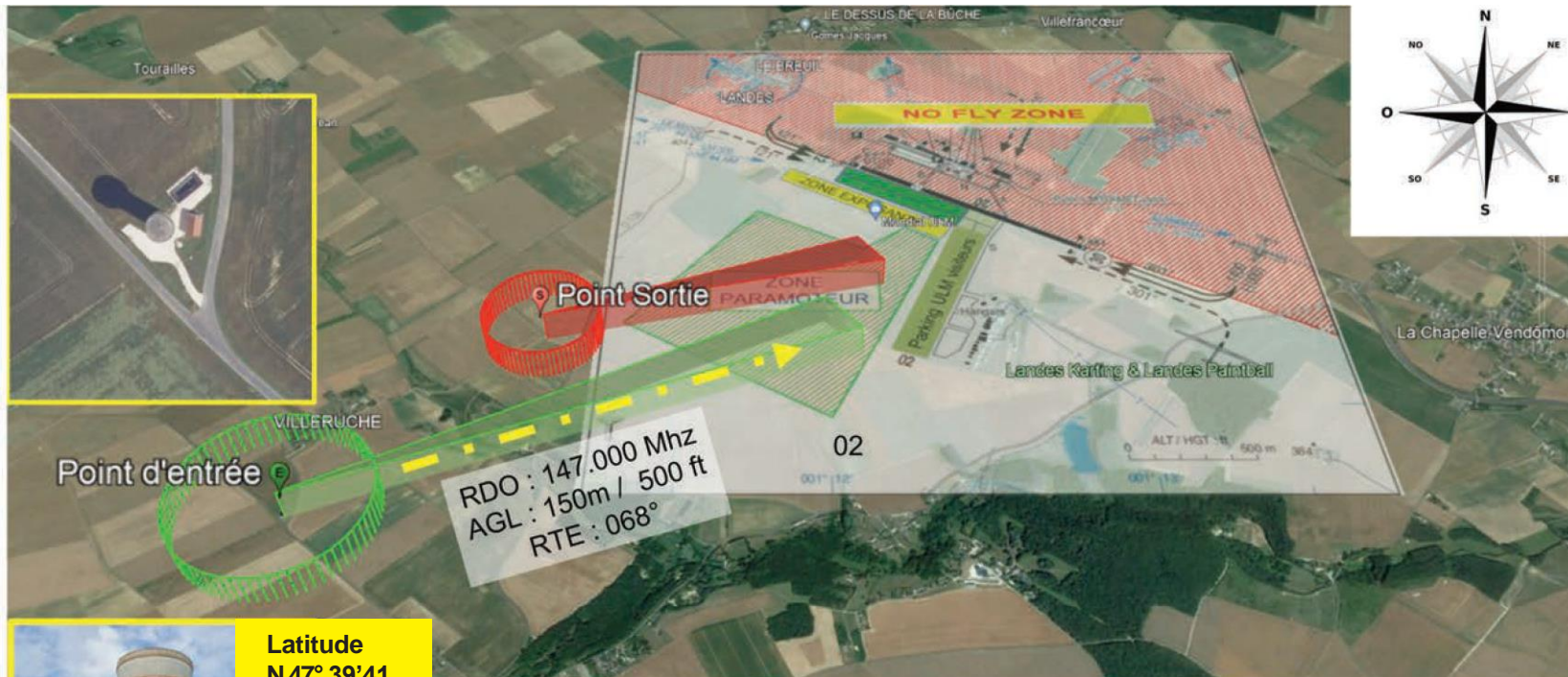
- **IF YOU ARRIVE FROM THE NORTH, YOU MUST AVOID THE RESTRICTED AREA**

- You should contact paramotor operations on 147.000 for joining instructions.
- You must enter the restricted area at 150ft AGL / 500ft AMSL via the Landes-le-Gaulois water tower.
- You must not fly above 275m / 900 ft QNH, to avoid conflicts with aircraft in the south-side circuit for RWY 12/30 grass

**47°39'41" N - 001°10'14"E, radial 231°
3,4km from Blois Airfield**

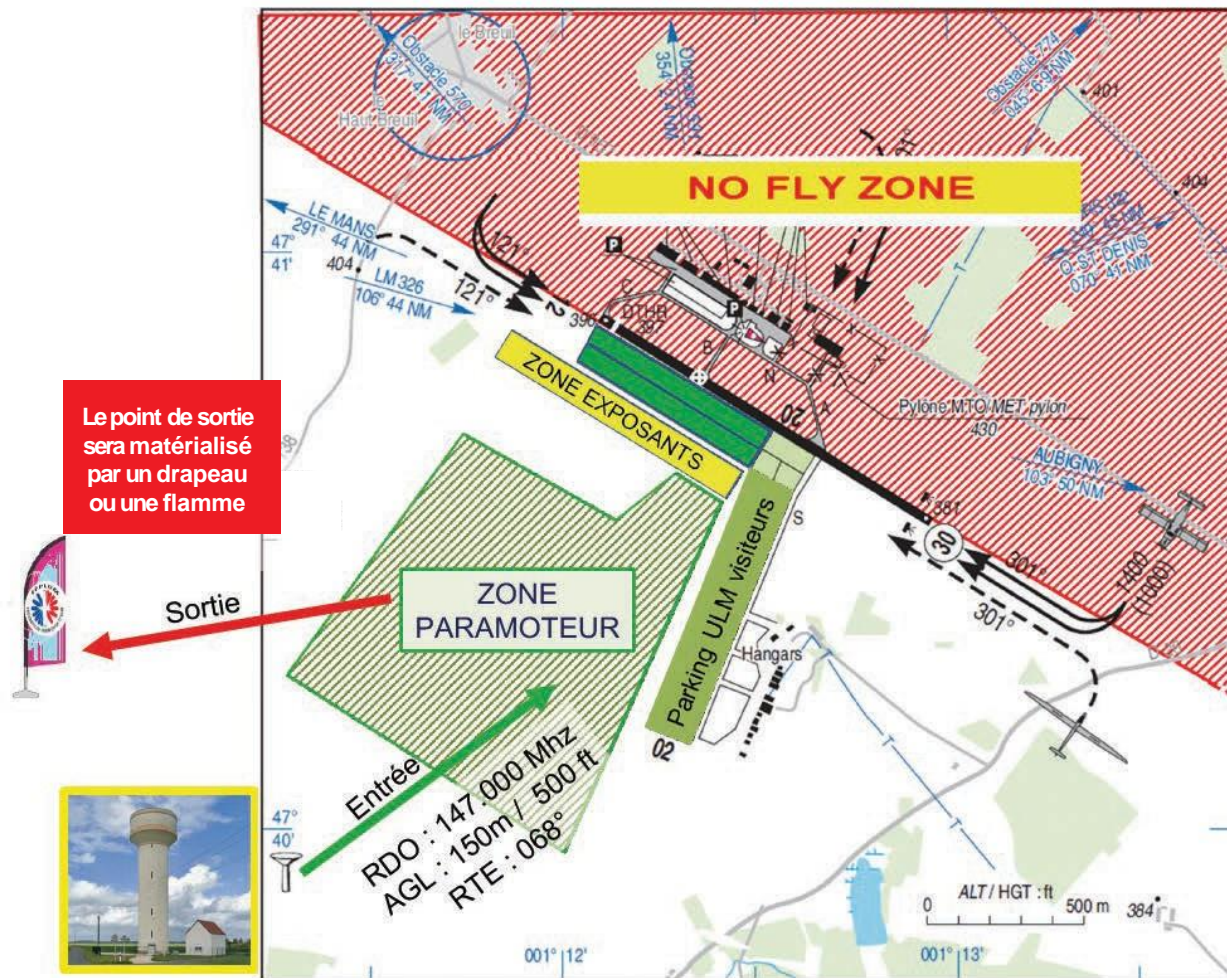
- On first contact, give your assigned callsign and then **maintain radio silence until you are given instructions by paramotor operations.**
- Operations will provide approach information and give you clearance to continue into the landing area.
- The paramotor landing area is on a track of 068 from the water tower.

INFORMATION FOR PARAMOTOR PILOTS: JOINING PROCEDURES



Latitude
N 47° 39'41
Longitude
E 1° 10'14

INFORMATION FOR PARAMOTOR PILOTS : JOINING PROCEDURES



PARAMOTOR PILOTS: DEPARTURE AND RETURN INSTRUCTIONS



• REQUIREMENTS

You must register in advance sur www.mondialulm.fr to obtain a radio call sign.

- Before departure, you should report to the paramotor tent with:
 - Your paramotor licence
 - Proof of insurance
 - Registration documents
 - Microlight competency certificate



• MINIMUM EQUIPMENT REQUIRED



- PARAMOTOR RADIO
- 147,00 Mhz



- ALTIMETER / VARIOMETER

- The flight operations team will brief pilots on departure and return procedures.

AIRBORNE DISPLAY PROCEDURES

- Airborne display operations are governed by the French Official Decree (version 3) from 29 March 2024. The International Microlight Show is classed as a public airshow, subject to local government approval.
- Pilots wishing to perform airborne displays must register with the flight operations manager (or paramotor operations team), and provide details of the display they intend to carry out. Original aircraft documentation must be provided.
- Pilots wishing to perform airborne displays must fill in the CERFA 16179 form, which can be downloaded here: https://www.ecologie.gouv.fr/sites/default/files/cerfa_16179_Participation_SAPv1.pdf Please submit the form by email to eric@bellinghery.fr
- Airborne display rehearsals will take place on Thursday between 1700 and 1830 Local Time. Depending on their level of experience, the flight operations team reserve the right to require pilots to take part in a rehearsal flight before their display.
- The flight operations team will assign a display time to each pilot.
- ALL airborne display pilots must attend an in-person briefing with the flight operations team. Roll call will be taken at this briefing, and failure to attend will result in the cancellation of your display flight.
- Airborne display flights may be accompanied by commentary from our own commentators alongside any other commentary.



AIRBORNE DISPLAY PROCEDURES

- Display pilots must attend an in-person briefing. Failure to attend will result in cancellation of your display flight, without the possibility to rebook.
- Roll call will be taken to ensure physical attendance at all briefings.
- Aircraft must be fully ready for departure (including power checks) 5 minutes before the assigned display time
- Airborne display operations take place entirely at the pilot's and operator's own risk.
- Operators are responsible for ensuring pilots are suitably qualified.
- Pilots **MUST NOT** overfly the paramotor area or crowds.
- Passengers must not be carried during airborne display flights, except if required for the safe execution of the flight.

AIRBORNE DISPLAY PROCEDURES

- Airborne display pilots must comply with specific rules:

N°	REGULATORY TEXT	ALTERNATIVE REGS	CONDITIONS
2	SAP.OPS.205 II 1°	<p>Flights below 500ft</p> <p>Extension of recency requirements from 36 months to 60 months + 16 days</p>	<p>The risk assessment provided by the applicant must contain at least the following risk mitigation measures:</p> <ul style="list-style-type: none"> - Compensate for display skills attrition by requiring at least 3 training / rehearsal flights for the relevant program within the last month, in realistic conditions, and - Require a distance of at least 100m from crowds (or greater, depending on the speed and type of operation, ref: SAP.OPS.305)
3	SAP.OPS.205 II 1°	<p>Flights below 500 ft for a pilot who does not fulfil the requirements listed in SAP.OPS.205 II 1°</p>	<p>The risk assessment provided by the applicant must contain at least the following risk mitigation measures:</p> <ul style="list-style-type: none"> - No aerobatic manoeuvres or unusual attitudes below 500ft - No operations (except for takeoff and landing) below 300ft) - Compensate for display skills attrition by requiring at least 3 training / rehearsal flights for the relevant program within the last month, in realistic conditions, and - Require a distance of at least 100m from crowds (or greater, depending on the speed and type of operation, ref: SAP.OPS.305)



• AIRBORNE DISPLAY REGISTRATION

Registration can be done online at www.mondialulm.fr or at the event via the flight operations / paramotor operations team.

• Name of operator / Manufacturer

• Nationality

• Make and model of aircraft being demonstrated

• Aircraft registration

• Pilot Name > Licence / Insurance / ID

• Display time and area>

• Will you have your own commentator? yes no Name of commentator (s) :

• Other information>

FAQ

CAN I FLY IN TO THE SHOW?

Yes, you may fly in with a microlight, aeroplane, or helicopter. The event is strictly PPR and you must book a slot at www.mondialulm.fr

WHEN CAN I FLY IN?

The show opens on Friday morning at 9am. Pilots may arrive by air from Thursday onwards, subject to PPR. Food will be available from Thursday lunchtime. Shower and toilet facilities will be available from Thursday night.

WHAT ARE THE JOINING PROCEDURES?

The grass runway 30/12 (640m x 70m) allows direct access to the microlight parking area. All circuits are to the south. See the joining procedures for the south side circuit

The paved runway 30/12 (1250m x 30m) allows access to the aeroplane parking area and Avgas pumps. All circuits are to the north. See the joining procedures for the north side circuit.

Paramotor pilots can land and takeoff using the designated paramotor areas.

CAN PARAMOTOR PILOTS FLY INTO/DURING THE SHOW?

Yes. You can register online at www.mondialulm.fr or at the event, by visiting the paramotor tent.

You do not need to have an airband radio. A paramotor radio is sufficient.

WHAT RADIO FREQUENCY SHOULD I USE?

All circuits: You must listen to the ATIS on 127.250

When entering the restricted area:

- South side circuit: Blind calls on 130.200

- North Side Circuit: BLOIS INFORMATION (FISO) 118.455

Southern apron ground frequency: 123.250 (marshalling will also use flags)

Paramotor frequency 147.000 (radio contact required)

WHEN WILL THE RESTRICTED ZONE BE ACTIVATED?

From Thursday 0400 UTC SR-30 (0600 LT) to Sunday 19h02 UTC SS +30 (2102 LT).

WHAT IS SAFESKY?

SafeSky is a free mobile application to aid traffic separation. We strongly recommend that you install the application before attending the show. When registering to attend, you will receive a coupon for a free premium subscription to SafeSky.

Users of the SafeSky App can see all other users in the air at any given time. You will also receive visual and audible alerts for converging traffic within a user-defined radius (0.1NM-03NM, 1NM-2NM, 3NM-6NM, 12-24 NM).

That being said, the application cannot and must not replace the basic principle of SEE AND AVOID, and you should still maintain an effective lookout.

The system can be configured so that you hear audible alerts via your headset.

- When registering the event, you will receive one month's subscription free of charge.

Safesky allows FISOs and other personnel to see traffic in both circuits.

CAN I FLY IN FROM ABROAD?

If you are coming from a Schengen country, you will need to file a flight plan.

Don't forget to register for the event at www.mondialulm.fr

If you are arriving from outside the Schengen zone, you must make your first landing at an airfield providing passport control (passport control is not available at Blois).

English radio calls are only allowed if using the north side circuit.

European microlight aircraft with a MTOW up to 600kg may attend the event without requesting prior autorisation (special arrangement with the federation).

WHAT TYPE OF AIRBORNE DISPLAYS WILL BE HAPPENING?

Throughout the three days, there will be a variety of airborne displays, including formation flying, paramotor flights, electric aircraft). These will take place in Friday morning, Saturday evening, at the end of the event on Sunday.

There will also be exhibitor flights on Saturday morning, Saturday afternoon, and Sunday morning.

HOW DO I GET FROM THE NORTHERN APRON TO THE SHOW?

Shuttle buses will be provided.

WILL FUEL BE AVAILABLE?

MOGAS will be available on the southern parking area, and Avgas will be available on the northern parking area.

Mogas is by prior booking only, and will be available until 1500 LT on Sunday.

Pilots are advised to organise refuelling as soon as possible after arrival.

IS THERE A LANDING FEE?

Blois Aerodrome has waived all landing fees for the event.

WHAT IS THE ENTRANCE FEE IF I FLY IN?

For in-flight arrivals, reduced price of €10.

CAN I CAMP ON SITE?

Yes, you may camp next to your aircraft (south side parking only)

WILL BALLOONS BE FLYING DURING THE EVENT?

Balloon displays will take place on Saturday morning and Sunday morning, weather permitting.

CONTACTS

Mondial de l'Ulm

Éric BELLINGHERY
Directeur des vols
06 45 47 39 30

Guy FRADILLON
Directeur des vols suppléant
06 83 24 72 42

Christian SANTINI
Directeur des vols Apprenti
06 73 47 99 75

Coordinateurs
Coordinateurs des Vols
06 27 84 44 30

Gérard BOYER
**Directeur des Vols Adjoint
Paramoteur**
06 82 33 73 10

Pascal VALLEE
**Directeur des Vols Suppléant
Paramoteur**
06 25 62 69 75

Louis Thomas RENARD
**Directeur des vol adjoint
Aérostat**
06 80 24 25 32

Jérôme BOURGOIN
**Directeur des vol suppléant
adjoint Aérostat**
06 82 91 26 31

Olivier HENRION
Responsable pistes
07 88 41 82 31

Julien LAURENT
Régisseur général
06 29 39 61 53

Jacques AYOUB
Médecin
06 21 71 93 01

Georges HUMEAU
Gestion MULM
06 58 58 77 97

Francis BERTHELET
Commercial - logistique
06 30 22 61 12

**FÉDÉRATION
FRANÇAISE D'ULM**
01 49 81 74 43
ffplum@ffplum.org
www.ffplum.fr



MULM
MONDIAL DE L'ULM



mondialulm.fr

